



SINCE 1974

Flameproof & Weatherproof Switch Socket with Transformer

● Technical Data : PA 61000

PROTECTION :

IP-65 / IP-66 AS PER IS/IEC 60529

CERTIFICATION :

CIMFR/TC/SR/797
CIMFR/TC/SR/1474

COMPONENTS :

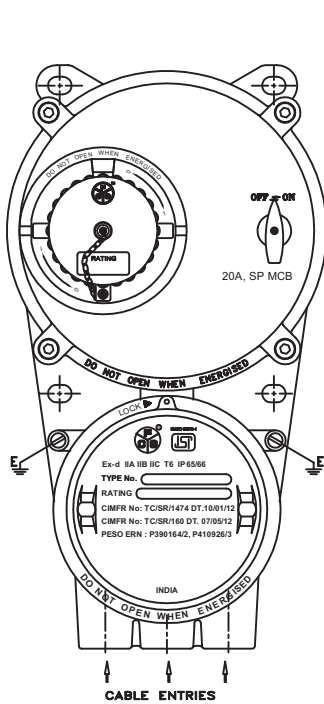
- A) 16A, DP 230V, AC SWITCH - 1 No (Max 32A).
- B) MATCHING PLUG & SOCKET 3 PIN- 1 No.
- C) TRANSFORMER 100VA 240V / 24V 100VA - 1 No.
- D) HRC FUSE - 4 Nos.
- E) TERMINALS, CLIPON TYPE RAIL MOUNTED
2.5 Sq.mm. x 2 Nos (Max 16 Nos).

SPECIAL FEATURES :

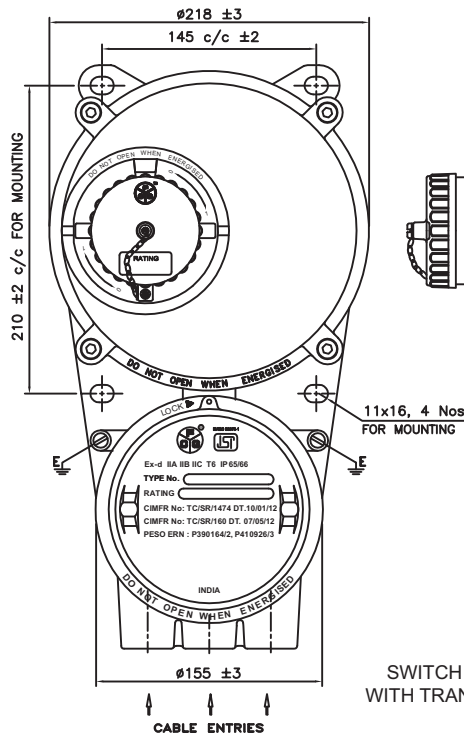
THIS UNIT IS FOOLPROOF INTERLOCKED.
SWITCH CAN NOT BE PUT "ON" UNLESS PLUG IS FULLY INSERTED AND ROTATED CLOCKWISE OR PLUG CAN NOT BE PULLED OUT UNLESS SWITCH IS PUT "OFF" BY ROTATING THE PLUG IN THE ANTICLOCKWISE DIRECTION.

CABLE ENTRY :

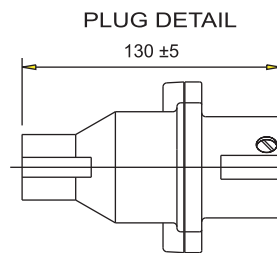
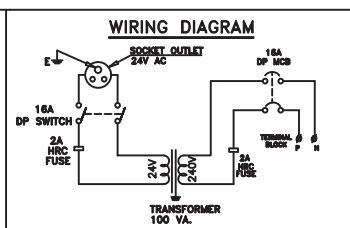
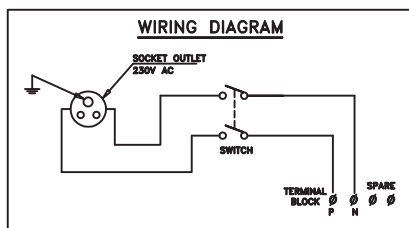
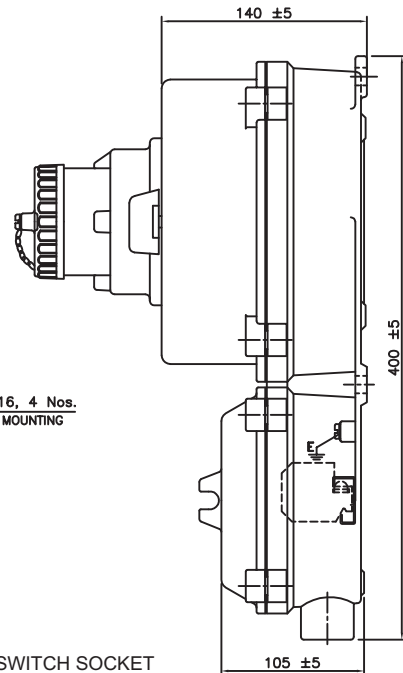
M20 x 03 Nos.



SWITCH SOCKET WITH MCB



SWITCH SOCKET WITH TRANSFORMER



PLUG DETAIL