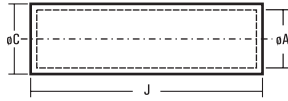
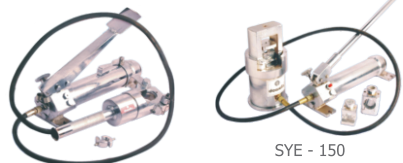




## COPPER TUBE IN- LINE CONNECTORS



SYD - 20



SYE - 150

SYT 102



SYB - 95



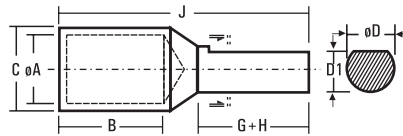
SYT - 17

SYA - 427

SYT - 2

mm <sup>2</sup>	øA	øC	J	Dowell's CAT. No.	RECOMMENDED TOOLS & DIES				STD PKG
					SYB-95	SYD-20A	SYE-150A	SYT-102 R	
1.5	1.6	3.2	15	EH-453					200
2.5	2.4	4.0	15	EH-454					200
4.0	3.1	4.8	15	CB-3	SYA-427	SYT-17	SYT-2		200
4.6	3.5	5.5	15	EH-455					200
6.0	3.8	5.5	15	CB-4					200
10	4.5	6.2	20	EH-460	JBR-1				200
16	5.4	7.1	20	CB-6	JBR-2				200
25	6.8	8.8	32	CB-24	JBR-3				100
35	8.2	10.6	36	CB-25	JBR-4				100
50	9.5	12.4	40	CB-26	JBR-5			HY-267	100
70	11.2	14.7	40	CB-51	JBR-6			HY-268	50
95	13.5	17.4	45	CB-52	JBR-9	JDR-9	JER-7	HY-269	50
120	15.0	19.4	45	CB-53		JDR-10	JER-8	HY-270	30
150	16.5	21.2	55	CB-54		JDR-11	JER-9	HY-271	20
185	18.5	23.5	65	CB-55		JDR-12	JER-10	HY-272	20
240	21.0	26.5	80	CB-56		JDR-14	JER-11	HY-273	10
300	23.5	30.0	85	CB-57		JDR-15	JER-12	HY-274	10
400	26.8	34.8	90	CB-58			JER-13	HY-275	5
500	30.0	39.0	100	CB-59			JER-14	JEM-279	5
630	35.0	45.0	110	CB-61			JER-15	JEM-280	5

## COPPER REDUCER TERMINALS



MM <sup>2</sup>	øA	øC	øD	D-1	B	K	G-H	J	Dowell's CAT. No.	RECOMMENDED TOOLS & DIES					STD PKG
										SYB-95	SYD-20A	SYT-150A	SYE-150 B	SYT-102 R	
2.5	2.5	4.7	3.8	3.3	6	4	10	20	WPC-7						200
4.0	2.8	4.7	3.8	3.3	6	4	10	20	WPC-16						200
6.0	3.1	4.7	3.8	3.3	6	4	10	20	WPC-18						200
10	3.8	5.5	3.8	3.3	9	4	10	23	WPC-20						200
10	4.4	6.2	3.8	3.3	9	4	10	23	WPC-22						200
16	5.3	7.1	3.8	3.3	13	4	13	30	WPC-2						200
25	7.0	9.0	6.0	5.5	12	5	15	32	WPC-25						100
35	8.0	10.0	7.5	6.5	12	5	20	37	WPC-4						100
50	9.2	11.2	7.5	6.5	16	5	20	41	WPC-26						100
70	11.3	13.8	7.5	6.5	18	5	20	43	WPC-27					HY-267	50
95	12.8	15.6	11.5	10.5	20	6	25	51	WPC-29					HY-268	50
120	14.8	17.8	11.5	10.5	22	6	32	60	WPC-35				JEA-120	HY-269	30
150	16.0	19.6	11.5	10.5	26	6	32	64	WPC-37		JDR-11	JER-11	JEA-150	HY-270	20
185	18.0	22.0	11.5	10.5	32	6	32	70	WPC-38		JDR-12	JER-12	JEA-185	HY-271	20
225	20.0	26.0	15.6	14.0	38	8	32	78	WPC-39		JDR-14	JER-14	JEA-240	HY-272	10
240	21.2	26.0	15.6	14.0	38	8	32	78	WPC-43		JDR-14	JER-14	JEA-240	HY-272	10
300	24.0	28.7	16.0	15.0	42	8	42	92	WPC-45		JDR-15	JER-15	JEA-300	HY-273	10
400	27.0	33.2	15.6	14.0	46	12	32	90	WPC-101			JER-17	JEA-400	HY-274	5

### LINE CONNECTORS

SYA-427 SYT-17 SYT-2

LUGS SYSTEM

WE RESERVE THE RIGHTS AT ANY TIME TO MAKE ANY SPECIFICATION OR DIMENSIONAL CHANGES DEEMED NECESSARY TO ENSURE ADVANCEMENT IN THE DESIGN OR MANUFACTURE OF ANY PRODUCT

MATERIAL - EC GRADE COPPER 15 - 191

TOLERANCE ± 5%

FINISH - ELECTRO TINNED