

* Electrolytic High Conductivity Copper
* Electro Tinned Plated

| Product Ref. | Conductor Size mm ² | Stud Hole | Dimensions mm | | | | | | | |
|--------------|--------------------------------|-----------|---------------|----|------|------|------|------|------|----|
| | | | A | B | D | E | C | G | H | L1 |
| DIN 6-5 | 6 | M- 5 | 3.8 | 10 | 8.5 | 5.3 | 5.5 | 6.5 | 7.5 | 24 |
| DIN 6-6 | 6 | M- 6 | | | 8.5 | 6.4 | | 7.5 | 8.0 | |
| DIN 6-8 | 6 | M- 8 | | | 13.0 | 8.4 | | 10.0 | 10.0 | |
| DIN 10-5 | 10 | M-5 | 4.5 | 10 | 9.0 | 5.3 | 6.0 | 7.0 | 8.5 | 27 |
| DIN 10-6 | 10 | M-6 | | | 9.0 | 6.4 | | 7.5 | 8.5 | |
| DIN 10-8 | 10 | M-8 | | | 13.0 | 8.4 | | 10.0 | 10.0 | |
| DIN 16-6 | 16 | M-6 | 5.5 | 20 | 13.0 | 6.4 | 8.5 | 7.5 | 8.0 | 36 |
| DIN 16-8 | 16 | M-8 | | | 13.0 | 8.4 | | 10.0 | 10.0 | |
| DIN 16-10 | 16 | M-10 | | | 17.0 | 10.5 | | 12.0 | 12.0 | |
| DIN 16-12 | 16 | M-12 | | | 18.0 | 13.0 | | 13.0 | 13.0 | |
| DIN 25-6 | 25 | M-6 | 7 | 20 | 14.0 | 6.4 | 10.0 | 7.5 | 8.0 | 38 |
| DIN 25-8 | 25 | M-8 | | | 16.0 | 8.4 | | 10.0 | 10.0 | |
| DIN 25-10 | 25 | M-10 | | | 17.0 | 10.5 | | 12.0 | 12.0 | |
| DIN 25-12 | 25 | M-12 | | | 19.0 | 13.0 | | 13.0 | 13.0 | |
| DIN 35-6 | 35 | M-6 | 8.2 | 20 | 17.0 | 6.4 | 12.5 | 7.5 | 8.0 | 42 |
| DIN 35-8 | 35 | M-8 | | | 17.0 | 8.4 | | 10.0 | 10.0 | |
| DIN 35-10 | 35 | M-10 | | | 19.0 | 10.5 | | 12.0 | 12.0 | |
| DIN 35-12 | 35 | M-12 | | | 21.0 | 13.0 | | 13.0 | 13.0 | |
| DIN 35-14 | 35 | M-14 | | | 21.0 | 15.0 | | 14.5 | 14.5 | |
| DIN 50-8 | 50 | M-8 | 10 | 28 | 20.0 | 8.4 | 14.5 | 10.0 | 10.0 | 52 |
| DIN 50-10 | 50 | M-10 | | | 22.0 | 10.5 | | 12.0 | 12.0 | |
| DIN 50-12 | 50 | M-12 | | | 24.0 | 13.0 | | 13.0 | 13.0 | |
| DIN 50-14 | 50 | M-14 | | | 24.0 | 15.0 | | 14.5 | 14.5 | |
| DIN 50-16 | 50 | M-16 | | | 28.0 | 17.0 | | 16.0 | 16.0 | |
| DIN 70-8 | 70 | M-8 | 11.5 | 28 | 24.0 | 8.4 | 16.5 | 10.0 | 10.0 | 55 |
| DIN 70-10 | 70 | M-10 | | | 24.0 | 10.5 | | 12.0 | 12.0 | |
| DIN 70-12 | 70 | M-12 | | | 24.0 | 13.0 | | 13.0 | 13.0 | |
| DIN 70-14 | 70 | M-14 | | | 24.0 | 15.0 | | 14.5 | 14.5 | |
| DIN 70-16 | 70 | M-16 | | | 30.0 | 17.0 | | 16.0 | 16.0 | |
| DIN 95-8 | 95 | M-8 | 13.5 | 35 | 28.0 | 8.4 | 19.0 | 12.0 | 12.0 | 65 |
| DIN 95-10 | 95 | M-10 | | | 28.0 | 10.5 | | 12.0 | 12.0 | |
| DIN 95-12 | 95 | M-12 | | | 28.0 | 13.0 | | 13.0 | 13.0 | |
| DIN 95-14 | 95 | M-14 | | | 28.0 | 15.0 | | 14.5 | 14.5 | |
| DIN 95-16 | 95 | M-16 | | | 32.0 | 17.0 | | 16.0 | 16.0 | |
| DIN 120-10 | 120 | M-10 | 15.5 | 35 | 32.0 | 10.5 | 21.0 | 15.0 | 16.0 | 70 |
| DIN 120-12 | 120 | M-12 | | | 32.0 | 13.0 | | 16.0 | 17.0 | |
| DIN 120-14 | 120 | M-14 | | | 32.0 | 15.0 | | 18.0 | 18.0 | |
| DIN 120-16 | 120 | M-16 | | | 32.0 | 17.0 | | 19.0 | 20.0 | |
| DIN 120-20 | 120 | M-20 | | | 38.0 | 21.0 | | 21.0 | 22.0 | |

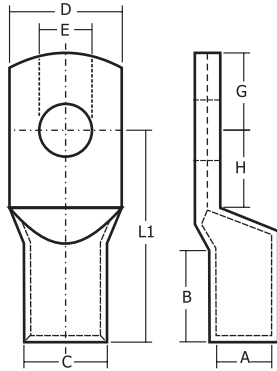
WE RESERVE THE RIGHTS AT ANY TIME TO MAKE ANY SPECIFICATION OR DIMENSIONAL CHANGES DEEMED NECESSARY TO ENSURE ADVANCEMENT IN THE DESIGN OR MANUFACTURE OF ANY PRODUCT

LUGS SYSTEM

MATERIAL -EC GRADE COPPER IS -191

TOLERANCE=± 5%

FINISH - ELECTRO TINNED



45° ANGLE TYPE

90° ANGLE TYPE

* Electrolytic High Conductivity Copper
* Electro Tinned Plated

WE RESERVE THE RIGHTS AT ANY TIME TO MAKE ANY SPECIFICATION OR DIMENSIONAL CHANGES DEEMED NECESSARY TO ENSURE ADVANCEMENT IN THE DESIGN OR MANUFACTURE OF ANY PRODUCT

| Product Ref. | Conductor Size mm ² | Stud Hole | Dimensions mm | | | | | | | |
|--------------|--------------------------------|-----------|---------------|-----|----|------|------|----|----|-----|
| | | | A | B | D | E | C | G | H | L1 |
| DIN 150-10 | 150 | M-10 | 17.0 | 35 | 34 | 10.5 | 23.5 | 15 | 16 | 78 |
| DIN 150-12 | 150 | M-12 | | | 34 | 13.0 | | 16 | 17 | |
| DIN 150-14 | 150 | M-14 | | | 34 | 15.0 | | 19 | 20 | |
| DIN 150-16 | 150 | M-16 | | | 34 | 17.0 | | 19 | 20 | |
| DIN 150-20 | 150 | M-20 | | | 40 | 21.0 | | 21 | 22 | |
| DIN 185-10 | 185 | M-10 | 19.0 | 40 | 37 | 10.5 | 25.5 | 15 | 16 | 82 |
| DIN 185-12 | 185 | M-12 | | | 37 | 13.0 | | 16 | 17 | |
| DIN 185-14 | 185 | M-14 | | | 37 | 15.0 | | 19 | 20 | |
| DIN 185-16 | 185 | M-16 | | | 37 | 17.0 | | 19 | 20 | |
| DIN 185-20 | 185 | M-20 | | | 40 | 21.0 | | 21 | 22 | |
| DIN 240-12 | 240 | M-12 | 21.5 | 40 | 42 | 13.0 | 29.0 | 16 | 17 | 92 |
| DIN 240-14 | 240 | M-14 | | | 42 | 15.0 | | 19 | 20 | |
| DIN 240-16 | 240 | M-16 | | | 42 | 17.0 | | 19 | 20 | |
| DIN 240-20 | 240 | M-20 | | | 42 | 21.0 | | 21 | 22 | |
| DIN 300-14 | 300 | M-14 | 24.5 | 50 | 48 | 15.0 | 32 | 19 | 22 | 100 |
| DIN 300-16 | 300 | M-16 | | | 48 | 17.0 | | 19 | 22 | |
| DIN 300-20 | 300 | M-20 | | | 48 | 21.0 | | 22 | 22 | |
| DIN 400-14 | 400 | M-14 | 27.5 | 70 | 55 | 15.0 | 38.5 | 25 | 25 | 115 |
| DIN 400-16 | 400 | M-16 | | | 55 | 17.0 | | 25 | 25 | |
| DIN 400-20 | 400 | M-20 | | | 55 | 21.0 | | 25 | 25 | |
| DIN 500-16 | 500 | M-16 | 31.0 | 70 | 60 | 17.0 | 42 | 25 | 25 | 125 |
| DIN 500-20 | 500 | M-20 | | | 60 | 21.0 | | 25 | 25 | |
| DIN 625-16 | 625 | M-16 | 34.5 | 80 | 60 | 17.0 | 44 | 25 | 25 | 135 |
| DIN 625-20 | 625 | M-20 | | | 60 | 21.0 | | 25 | 25 | |
| DIN 800-16 | 800 | M-16 | 40.0 | 100 | 75 | 17.0 | 52 | 30 | 30 | 165 |
| DIN 800-20 | 800 | M-20 | | | 75 | 21.0 | | 30 | 30 | |
| DIN 1000-21 | 1000 | M-21 | 44.0 | 100 | 85 | 21.0 | 58 | 25 | 20 | 165 |

MATERIAL - EC GRADE COPPER IS -191

TOLERANCE ± 5%

FINISH - ELECTRO TINNED