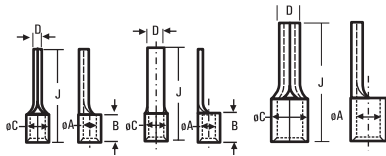


PIN TERMINALS

NON-INSULATED

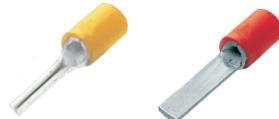
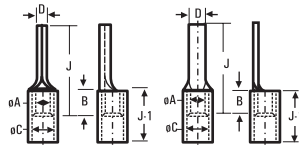


SYT -17



SYI -1210/ SYO-1210

INSULATED

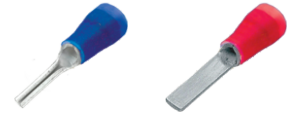
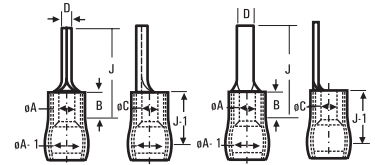


SYT - 2



SYA - 427

PRE-INSULATED



SYG - 2216 / SYH - 1614



SYB - 95

Tools Recomm For CP	MM ²	ØA	ØC	D	B	J	Type	Dowell's CAT. No.	J-1	Dowell's CAT. No.	ØA-1	Dowell's CAT. No.	STD PKG	Recommended Tools For CPI & CPD	
	1.5	1.6	3.2	1.9	5	17	I	CP-9	10	CPI-17	3.6	CPD-26	200	SYG-2216	
SYT-17	1.5	1.6	3.2	3.1	5	17	II	CP-35	10	CPI-40			200		
SYA-427	2.5	2.3	3.9	1.9	5	17	I	CP-1	10	CPI-18	4.4	CPD-27	200	SYH-1614	
SYT-2	2.5	2.3	3.9	3.1	5	17	II	CP-2	10	CPI-19	4.4	CPD-28	200		
	4.0	2.9	4.9	2.7	6	20	I	CP-3	14	CPI-20	6.4	CPD-29	200	SYI-1210	
	6.0	3.6	5.6	2.7	6	20	I	CP-5					200		
SYT-2	10	4.5	6.7	4.3	8	22	III	CP-7					200	SYB-95	JBR-1
	16	5.8	8.2	5.5	10	26	III	CP-8					200	SYB-95	JBR-2
	25	7.5	11.1	7.0	11	32	III	CP-86					100		
	35	9.0	12.6	7.5	12	37.8	III	CP-87					100		
SYB-95	50	10.5	14.1	9.0	16	42	III	CP-88					100		
	70	12.0	16.0	9.0	18	47	III	CP-89					50		
	95	13.5	18.1	9.0	20	52	III	CP-90					50		

MATERIAL -EC GRADE COPPER IS -191

TOLERANCE=± 5%

FINISH : ELECTRO TINNED