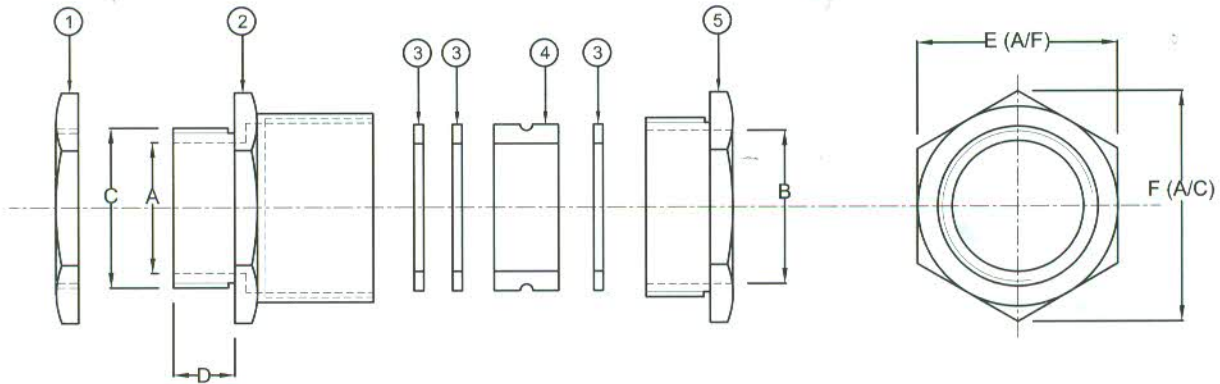


**SINGLE COMPRESSION BRASS CABLE GLANDS
HEAVY DUTY (SIBG TYPE)**



AN ISO 9001 : 2008 CERTIFIED CO.



SUITABLE OVER ALL DIAMETER	DOWELL'S CATLOGUE NO.	A (mm)	B (mm)	C (mm)	D (mm)	E A/F (mm)	F A/C (mm)
09.0 - 12.0	1616	12.0	16.0	16.0	9.0	22.0	25.5
12.0 - 15.5	1616	12.0	18.5	16.0	9.0	25.5	29.0
12.0 - 15.5	1919	15.0	18.5	20.0	9.0	25.5	29.0
18.0 - 20.0	2119	15.0	24.0	20.0	9.5	30.0	34.5
18.0 - 20.0	2125	20.5	24.0	25.0	9.5	31.5	36.0
21.0 - 25.0	2925	20.5	28.5	25.0	10.0	35.5	40.0
25.5 - 29.0	2932	27.0	33.0	32.0	12.0	40.0	46.0
29.0 - 33.0	2938	34.0	37.0	40.0	12.0	46.0	53.0
33.0 - 37.0	3638	34.0	41.0	40.0	12.0	41.5	57.5
38.0 - 42.0	4251	44.0	47.0	50.0	13.0	58.0	67.0
43.0 - 50.0	5451	44.0	52.0	50.0	13.0	65.0	75.0
48.0 - 54.0	5463	55.0	61.5	63.0	14.0	73.0	84.0
55.0 - 60.0	6063	55.0	65.0	63.0	14.0	77.0	89.0
61.0 - 66.0	6675	68.0	71.0	75.0	15.0	85.0	98.0
67.0 - 72.0	7882	67.0	76.0	75.0	15.0	90.0	104.0
73.0 - 78.0	7882	73.0	82.0	82.0	17.0	97.0	112.0

SR. NO.	PARTICULARS	MATERIAL	NOS.
1.	CHECK NUT	BRASS	1
2.	GLAND BODY	BRASS	1
3.	METAL WASHER	M.S.	3
4.	SEALING RING	NATURAL	1
5.	COMPRESSION RING	BRASS	1

NOTE :

- Tolerances :- +/- 2 mm
- Raw Material :- Brass As Per IS-319 (Alu./S.S./M.S./ Also Available).
- Finish :- Bright Nickel Plated (Also Tin/Chrome/Cadmium).
- Entry Thread :- BSC/ET

WE RESERVE THE RIGHTS AT ANY TIME TO MAKE ANY SPECIFICATION OR DIMENSIONAL CHANGES DEEMED NECESSARY TO ENSURE ADVANCEMENT IN THE DESIGN OR MANUFACTURE OF ANY PRODUCT